

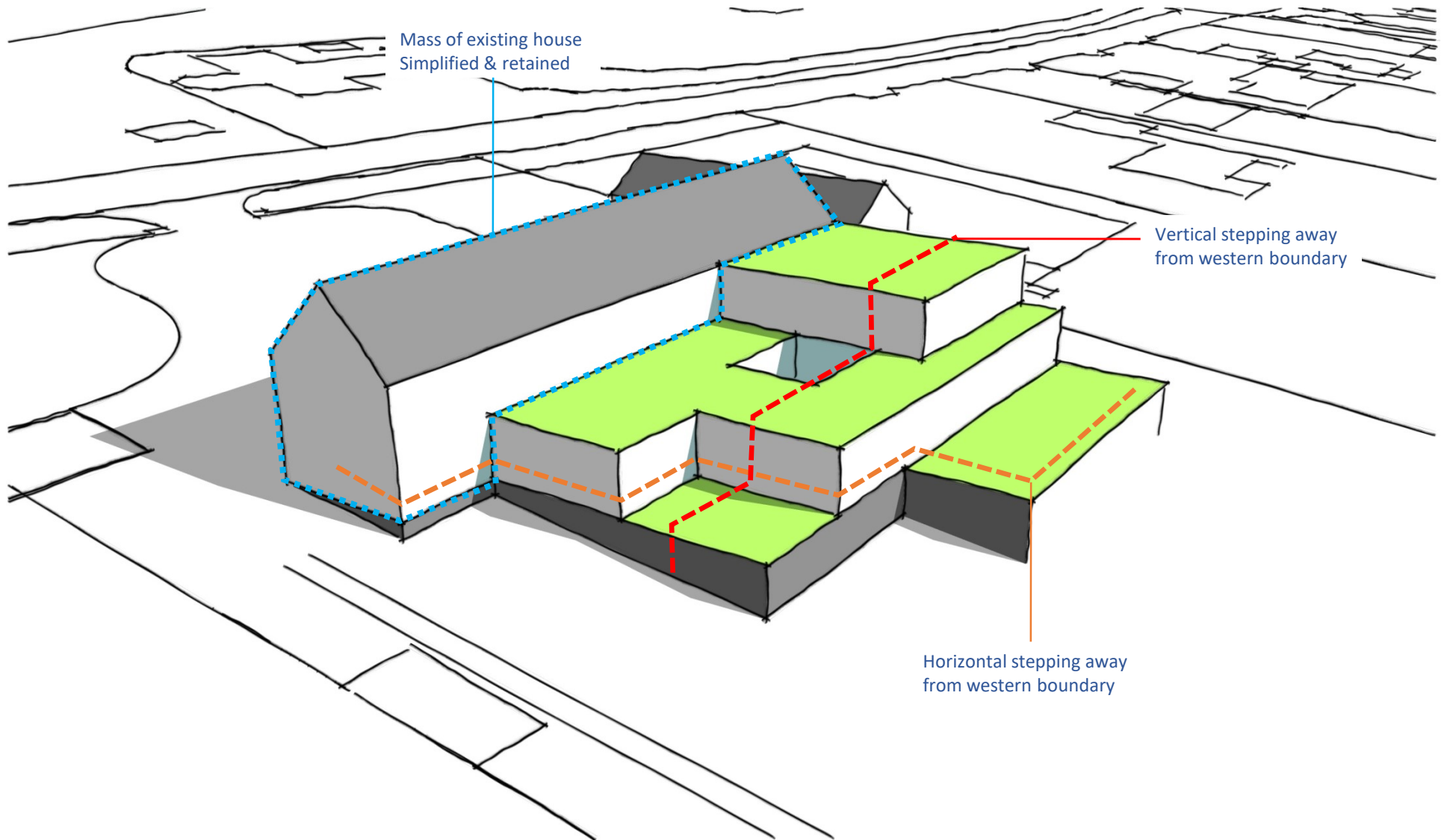


WEST WINDS, DINAS POWYS | SEPTEMBER 2021

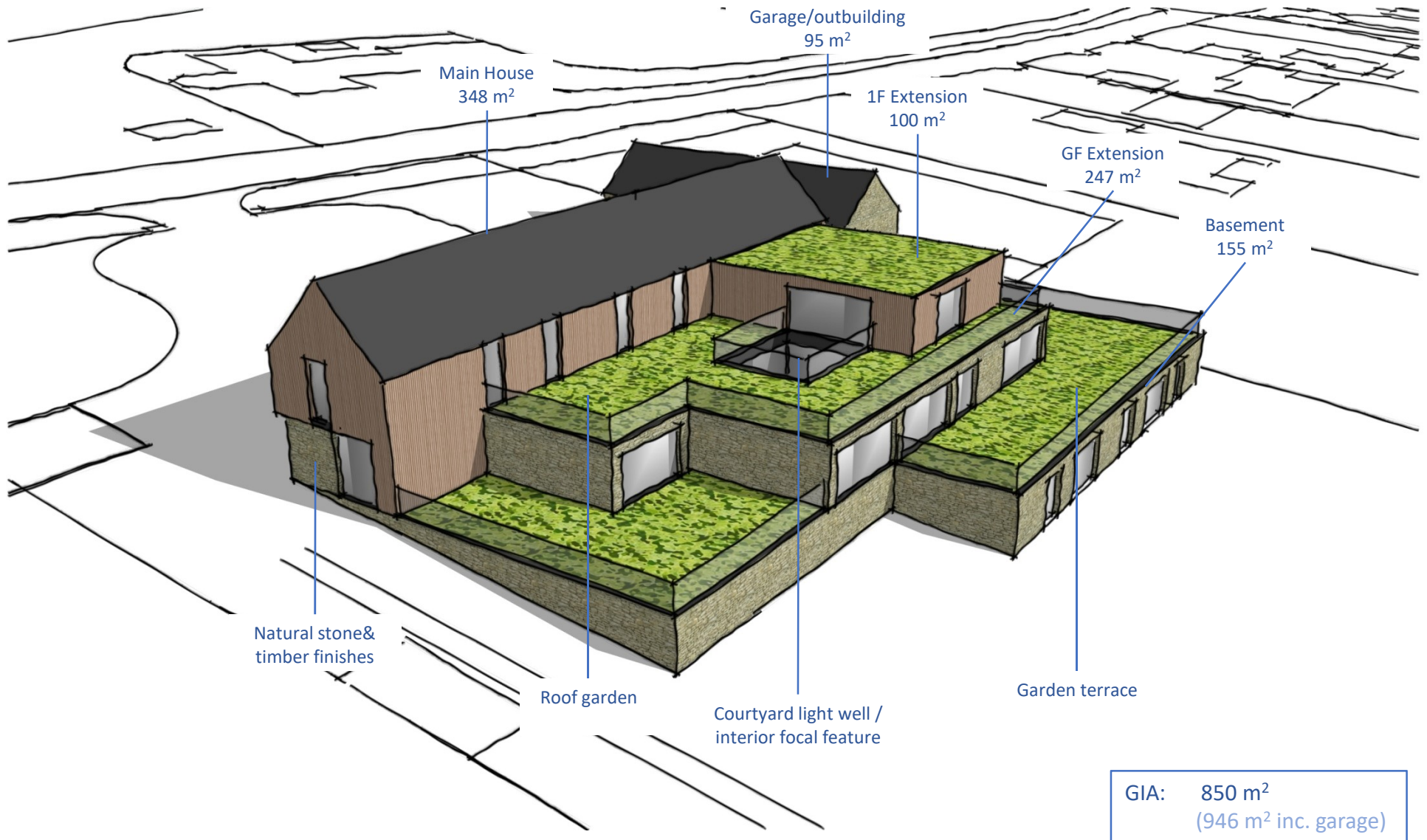
DESIGN BROCHURE



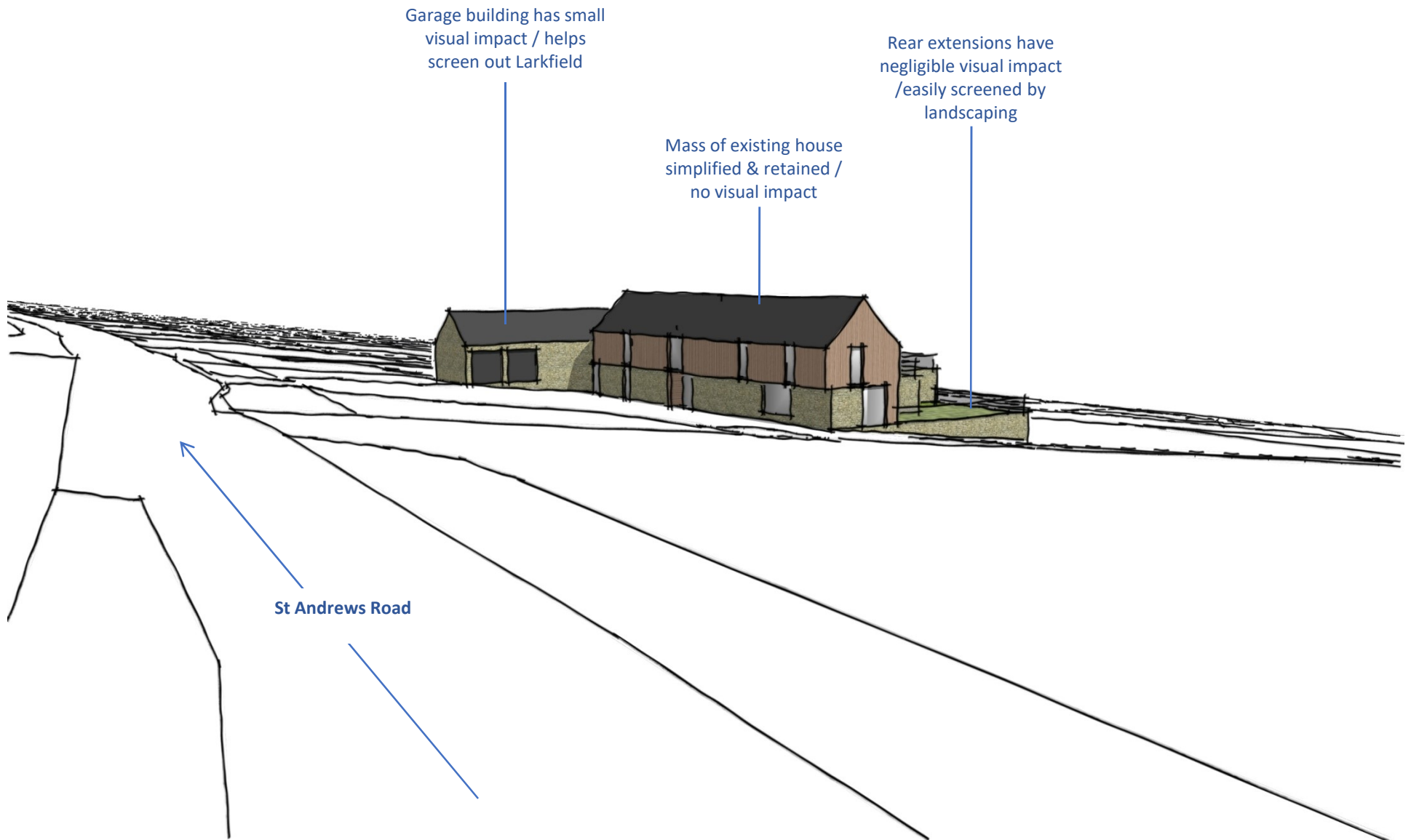
Massing Sketch
Minimal impact massing
from western approach & street front



Elevated View from Rear



View from St Andrews Road (approach)



View from St Andrews Road (front)

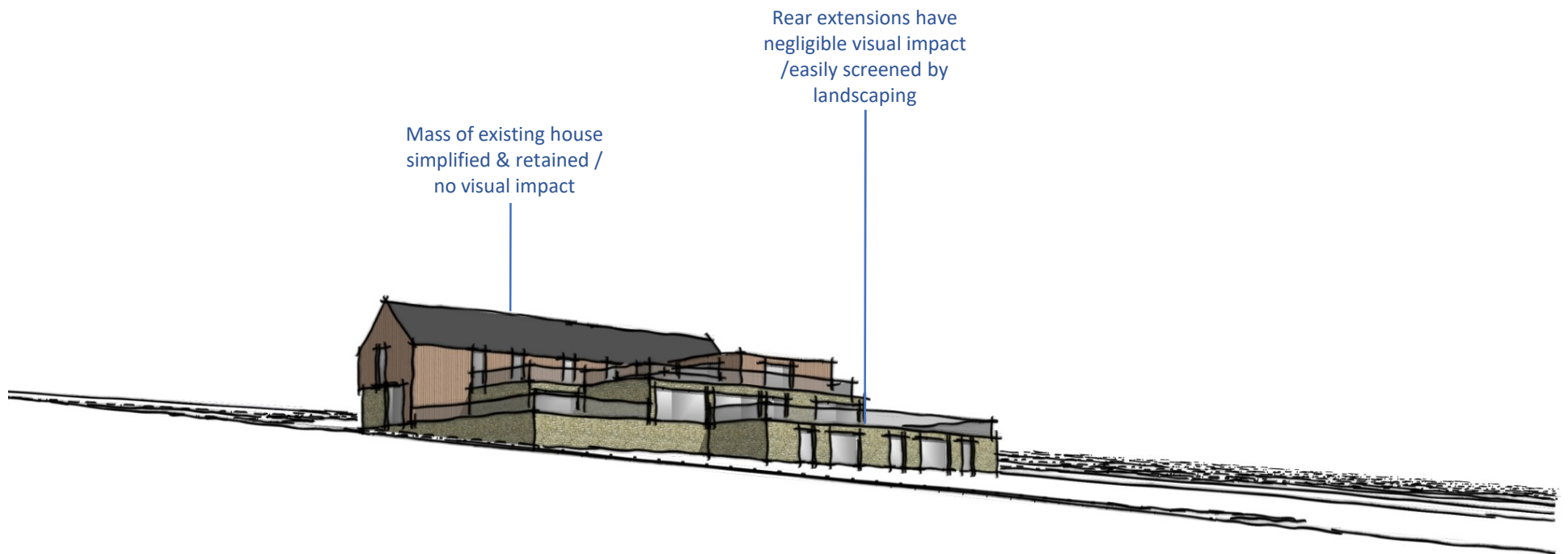


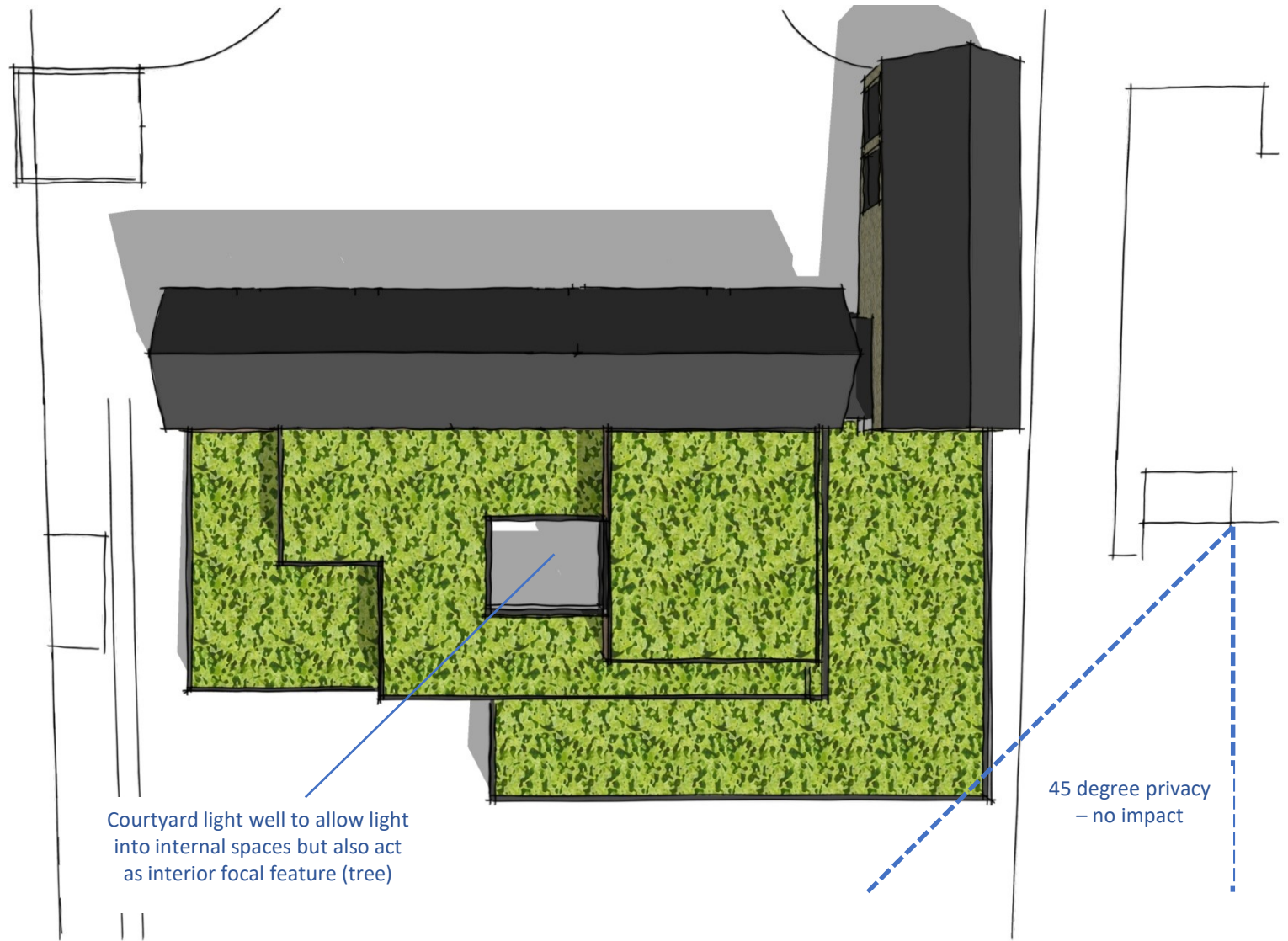
Garage building has small
visual impact / helps
screen out Larkfield

Mass of existing house
simplified & retained /
no visual impact



St Andrews Road







Precedents
Modern vernacular
Traditional forms, Modern massing & detailing

Contemporary architecture with warm, natural materials



Contemporary architecture with warm, natural materials



Contemporary architecture with warm, natural materials



